

Welcome to the AccessibilityOnline Webinar Series



A collaborative program between the ADA National Network and the US Access Board

The Session is Scheduled to begin at 2:30pm Eastern Time
We will be testing sound quality periodically

Audio and Visual are provided through the on-line webinar system. This session is closed captioned. Individuals may also listen via telephone by dialing 712-432-3100 code 930098 # (This is not a Toll Free number)

The content and materials of this training are property of the US Access Board and the Great Lakes ADA Center and cannot be used and/or distributed without permission. This program is funded through a contract agreement with the U.S. Access Board. For permission to use training content or obtain copies of materials used as part of this program please contact us by email at adata@adagreatlakes.org or toll free (877)232-1990 (V/TTY)

www.AccessibilityOnline.org

1



Webinar Features

- **Closed captioning** – click **CC** icon (top of screen) or control-F8 and adjust the captioning screen as needed
- **Customize your view** – choose “View” from the menu bar at the top of the screen and choose the layout you prefer from the dropdown menu.
- **Questions** - type and submit questions in the Chat Area Text box or press control-M and enter text in the Chat Area
- **Emotions/Hand-raising:** Please do not use these features during this session

2

Presenters



Dave Yanchulis

Peggy Greenwell

Rex Pace

3

2010 ADA Accessibility Standards

Session Agenda

- Application/Effective Dates
- Building Blocks
- Doors
- Parking
- Detectable warnings
- Public Rights of Way
- Plumbing Elements
- Kitchens and Kitchenettes
- ITM's & ATM's
- Signage
- Benches
- Recreation facilities

4

Application/ Effective Dates

5

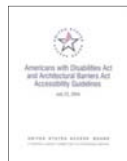
New ADA Standards



DOJ's 2010 standards
(mandatory March 15)



**Based on the Board's
ADA-ABA Guidelines (2004)**



6

Effective Date

Applies to date:

- building permit/ permit extension application is certified as complete (or is submitted where completion not certified)
- OR
- start of physical construction or alteration (where no permit required and title II entities)

7

2010 ADA Standards



Additional DOJ requirements:

- Social Service Center Establishments
- Housing at Places of Education
- Assembly Areas
- Medical Care Facilities
- Residential Dwelling Units
- Detention and Correctional Facilities
- Places of Lodging

8

2010 ADA Standards

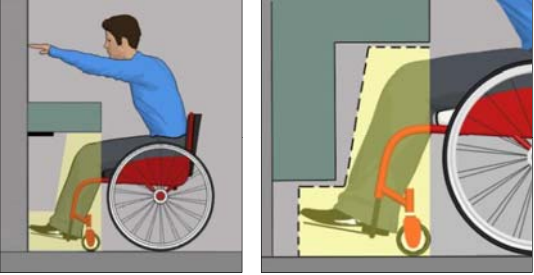
Apply to all facilities covered by the ADA except public transit facilities which are subject to DOT's ADA Standards (2006)



9

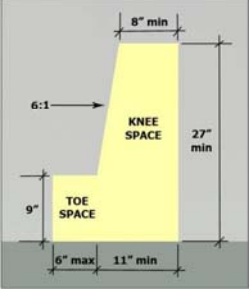
Building Blocks

Knee and Toe Space



Addressed generally as "building block"

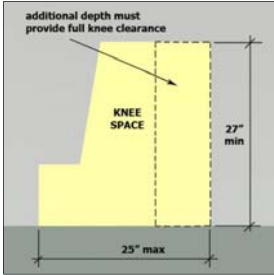
Knee and Toe Space



Min. depth (17") applies where knee/toe space required, including:

- Drinking fountains
- Lavatories & sinks
- Dining/work surfaces
- Counters (forward approach)

Knee and Toe Space



25" max. depth
(any element)

13

Doors

14

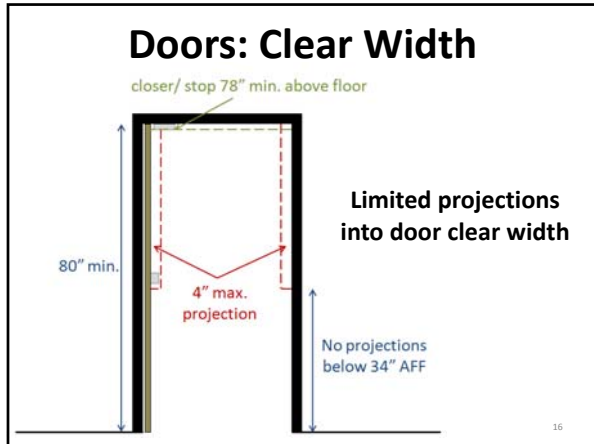
Entrance Doors

Exterior Doors: Automation Recommended



Max. 5 lb opening force does not apply
to exterior or fire doors

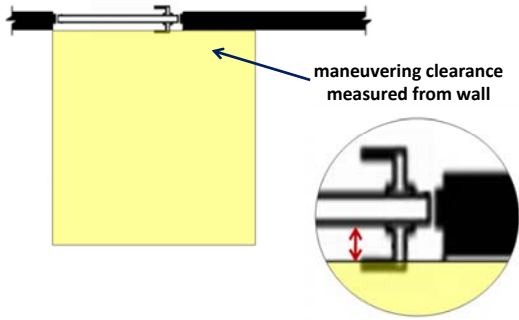
15







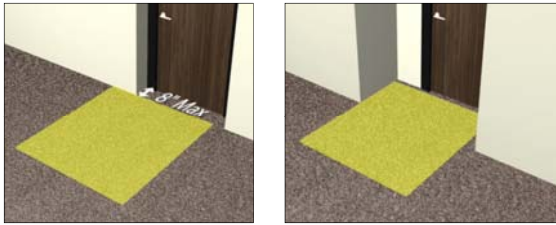
Maneuvering Clearances



19

Max. offset from face of door: 8"

Maneuvering Clearances



Recess: 8" max.

Recess: greater than 8"

20

Parking

21

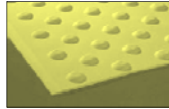
Detectable Warnings

22

Detectable Warnings

Required on curb ramps at:

- Transit facilities (DOT standards)
- FHwy funded projects
- Other public sidewalks (recommended – new ROW guidelines to address)



Not required on curb ramps at:

- Facilities (non-transit) located on sites

23

Detectable Warnings

Required at:

- Boarding platform edges (8.10.5)



Not required at:

- Hazardous vehicular areas

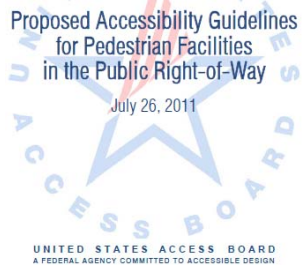
24

Public Rights of Way

25

Public Rights of Way

- NPRM published July 26, 2011
- Over 600 comments received
- Next step regulatory assessment and final rule
- Shared Use Path - next step - proposed rule, to be included with PROW provisions



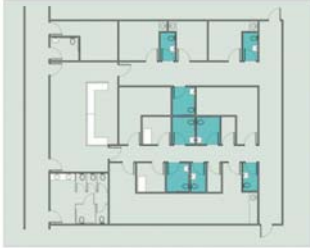
26

Plumbing Elements

27

Toilet Rooms in Series

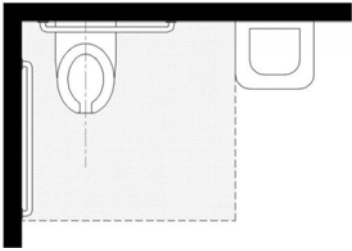
Access to at least 50% of single user toilet rooms clustered at one location that serve same users



28

Toilet Rooms

Lavatories no longer permitted to overlap WC clearance



29

Toilet Room

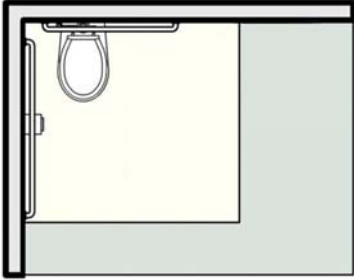
What is the required size of single user toilet rooms?

Minimum room size determined by:

- number/configuration of fixtures
- swing of doors
- other variables

30

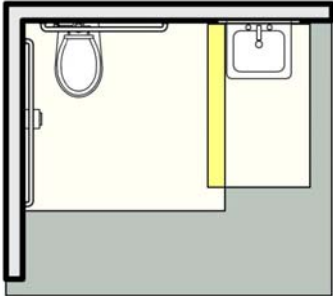
Sample Toilet Room



water closet clear floor space

31

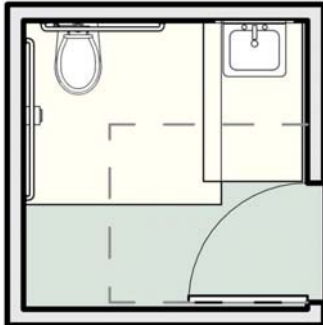
Sample Toilet Room



lavatory clear floor space

32

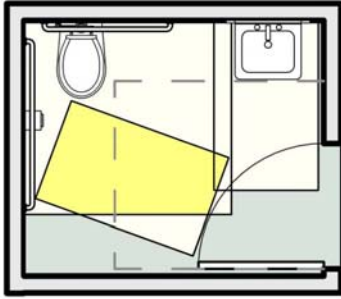
Sample Toilet Room



Door man. clearance; swing outside fixture clearances

33

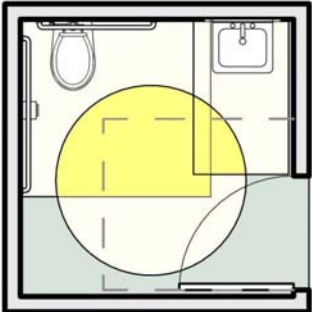
Toilet Room



Door can swing into fixture clearances if unobstructed wheelchair space provided beyond swing

34

Sample Toilet Room



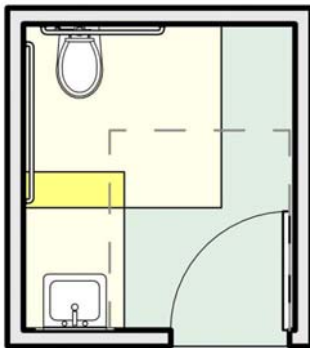
Turning space can overlap fixture clearances; door can swing into turning space

35

Toilet Room

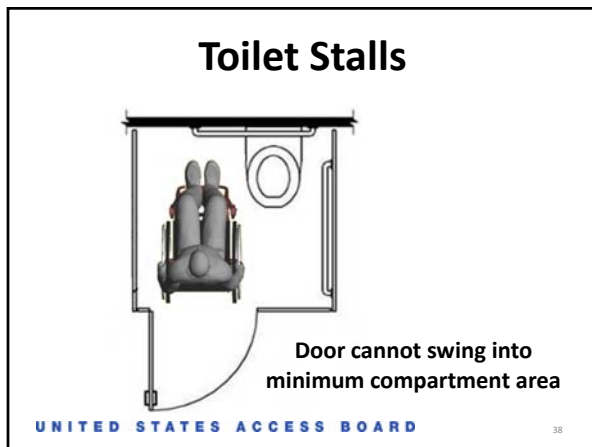
Same requirements apply for any design/ configuration

(turning space not shown)



36





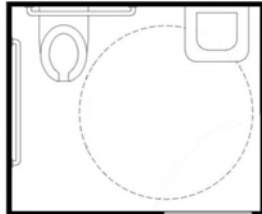


Toilet Stalls

Lavs in toilet stalls

Stalls with more >1 plumbing fixture treated as toilet room

Second accessible lav required outside stall



UNITED STATES ACCESS BOARD

40

Shower Spray Unit

Hand-held shower spray unit

on/off control with "non-positive shut-off"

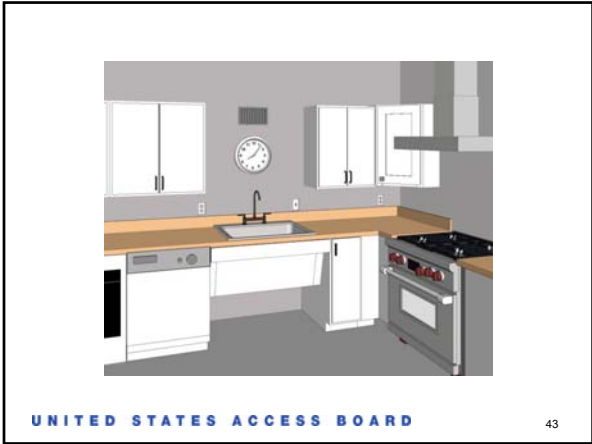


UNITED STATES ACCESS BOARD

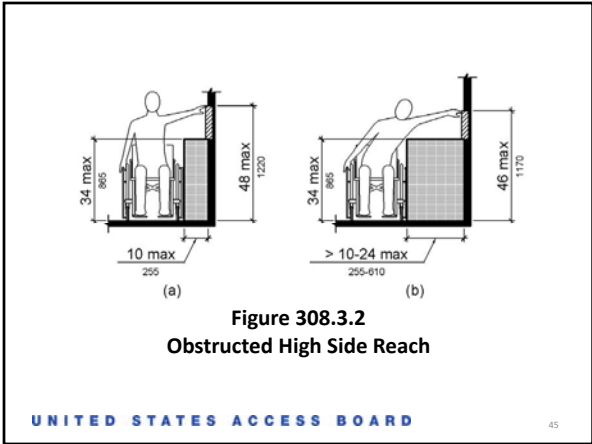
41

Kitchens and Kitchnettes

42













Signs

- Tactile/ visual – labels for permanent rooms & spaces, exit doors
- Visual only – directional or informational signs
- Exempt: temporary signs, building menus, directories, addresses, company names and logos



49

Tactile Signs

Scoping (interior & exterior):

- Restroom labels (at entry)
- Room numbers
- Room names not likely to change
- Floor levels
- Exit access/discharge
- Areas of Rescue Assistance

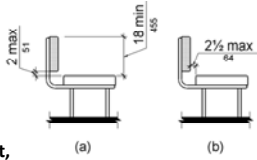
50

Benches

51

Benches (changing)

- Clear floor space
- 42 inches long minimum
- 20 minimum – 24 inches maximum in width
- Back support
- 17 – 19 inches height
- Structural strength
- Seat surface -slip resistant, no water accumulation



52

Recreation facilities

53

DOJ Guidance

- Two letters, one to the American Hotel and Lodging Association and the other to the Asian American Hotel Owners Association, regarding accessible entry and exit for swimming pools and spas have been added to ADA.gov and are now available.
- Letter to the American Hotel and Lodging Association (HTML) (PDF)
- Letter to the Asian American Hotel Owners Association (HTML) (PDF)
- People interested in finding out more about the ADA can access the ADA website at www.ADA.gov or call the toll-free ADA Information Line at 800-514-0301 or 800-514-0383 (TTY).

54

Pool Lift

- Located where water does not exceed 48 inches
- Footrests – must be provided and move with seat

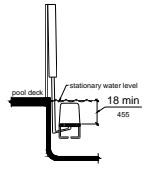


Fig 71
Pool Lift Submerged Depth

55

Pool lift

- Armrest – if provided opposite water shall be removable or fold in raised or load position
- Capable of unassisted operation – both deck and water



UNITED STATES ACCESS BOARD

56

Floating Boating Facilities



UNITED STATES ACCESS BOARD

57

Questions?

You may type and submit questions in the Chat Area Text Box or press Control-M and enter text in the Chat Area

58

U.S. Access Board

(800) 872-2253 (voice)
(800) 993-2822 (TTY)

E-mail: ta@access-board.gov
www.access-board.gov

59

Thank you for participating
in today's webinar



Next scheduled session:
"Accessibility Standards: "The Basics"
April 5, 2012

www.AccessibilityOnline.org

877-232-1990 (V/TTY)

60
